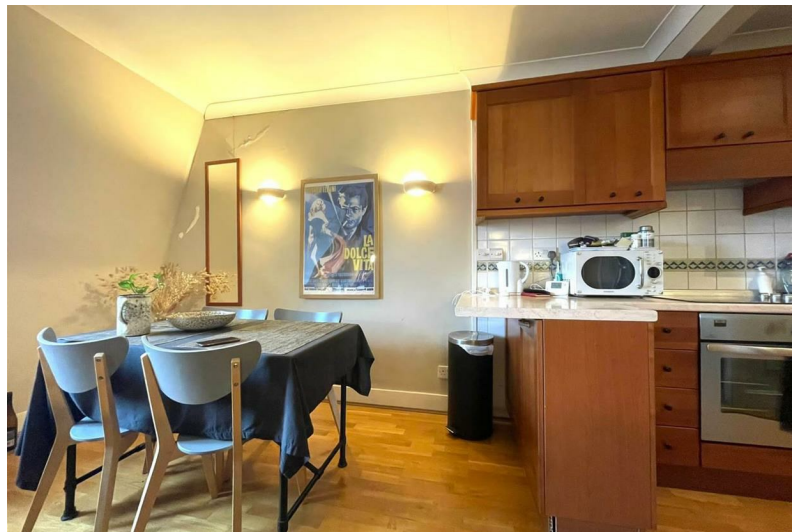


# Meath Street | London, SW11



**£1,750 Per Month**

- Period Conversion Flat • Top Floor • One Bedroom • Excellent Residential Location • Very Close to Battersea Park • Queenstown Road and Battersea Park Stations Moments Away • Short Walk to Chelsea Bridge • Wood Flooring • Well placed for Battersea Power Station Tube • Ideal for Single Professional or Couple

# Meath Street | London, SW11

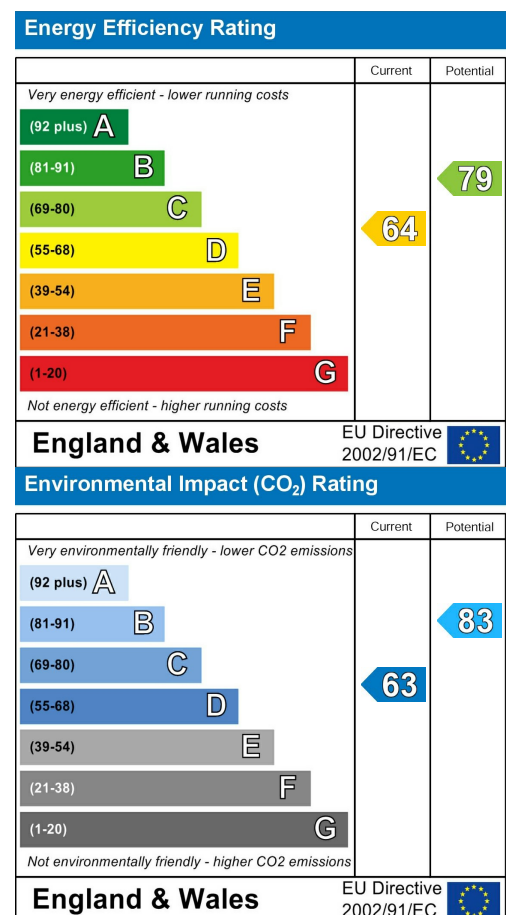


Top floor period conversion flat located on a highly sought after residential road moments from both Battersea Park and Queenstown Road Stations (one stop from Victoria and two from Waterloo) as well as 10 minutes walk to the Northern Line Tube Stop at the Power Station.

Consists of a good size open plan reception room with dining space and kitchen, double bedroom and bathroom. Situated just South of Chelsea Bridge with the wide open spaces, sports and leisure facilities of Battersea Park only a short walk away.

On street resident's parking permit available on application. Wandsworth Council Tax Band D. Ideal for a single professional or couple. Available from 12th April 2025, furnished.

NOTE: PICTURES ARE FROM THE END OF THE PREVIOUS TENANCY



These particulars are designed to provide a guideline only and cannot be relied upon as a statement of fact. The description represents the opinion of the author and is not intended to provide false or misleading information. Any prospective purchaser should make further checks on its accuracy. All measurements are approximate and floorplans are for representation only.



**Eden Harper**  
64 Battersea Park Road, London, SW11 4JP  
**0207 720 1116**  
info@edenharper.com  
www.edenharper.com